

1010

*1.5 oz Full Color Collector
Cup/Ceramic Shot*

Purchase Order #

XXXXXXXXXX

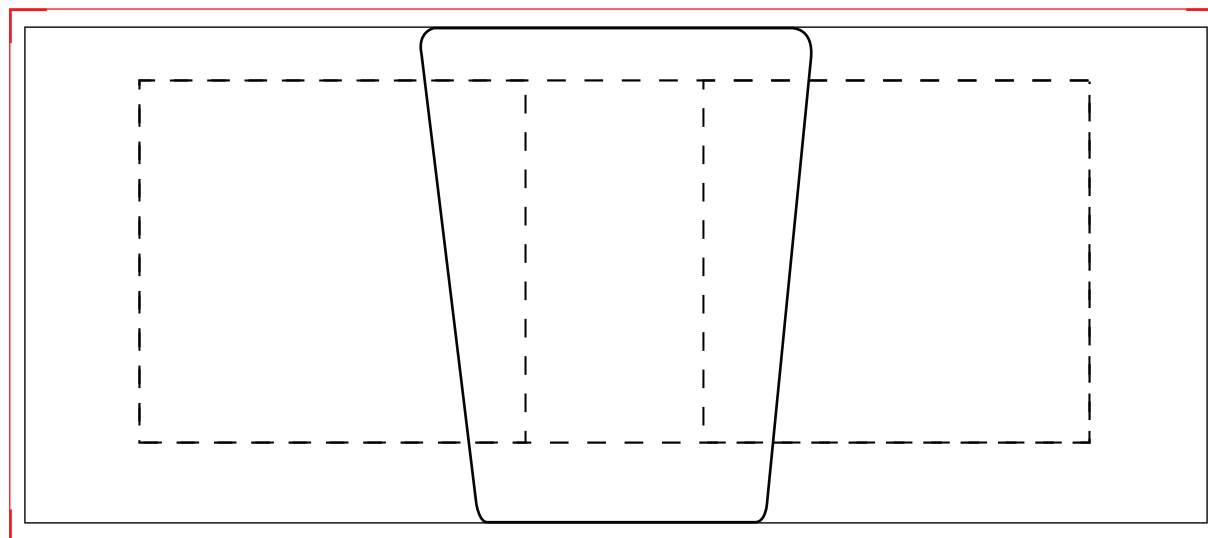
*Dashed line indicates imprint area and will not appear on your product.
Black line indicates the item outline and will not appear on your product
Red line indicates the full bleed line, and will not appear on your product*

JOB: XXXXXXXXXXXX

ARTIST: XXXXXXXXXXXX

BACKGROUND COLOR: XXXXXXXXXXXX

IMPRINT COLORS: XXXXXXXXXXXX



Please Note: If full bleed, sides of artwork will overlap.

**2 SIDED IMPRINT AREA: 2 in. W x 1.875 in. H
WRAP IMPRINT AREA: 4.9372 in. W x 1.875 in. H**

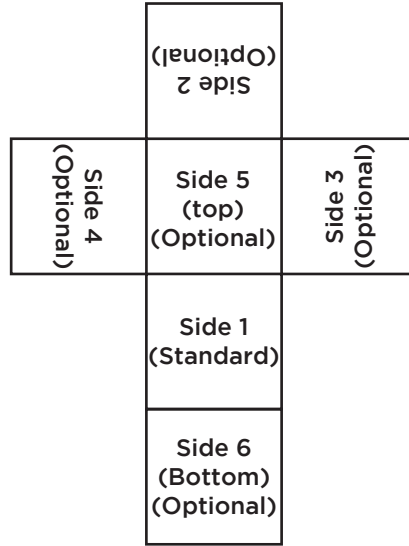
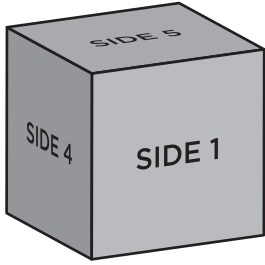
**Review this proof
to ensure that all elements are correctly placed.
Due to the variation in computer monitors and printing processes,
this proof is NOT FOR EXACT COLOR approval. Exact PMS color matching
is not available, however colors are within an acceptable range.**

COOLCUBES2

Cool Cubes w/Clear Packaging

Purchase Order # XXXXXXXXXX

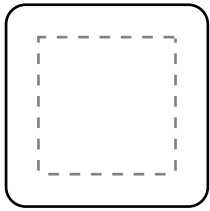
The dashed line will not print on any finished product; it is meant to denote the maximum imprint area for this item. Please note that the direction the text is reading on the diagram is the direction the text and graphic will be reading once engraved. There will be an additional charge per optional printed side.



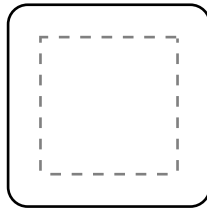
JOB: XXXXXXXXXXXX
ARTIST: XXXXXXXXXXXX
IMPRINT COLOR: LASER ENGRAVED

- 1 sided = standard side 1
- 2 sided = side 1 and side 2
- 3 sided = side 1, side 2, and side 5 (top)
- 4 sided = side 1, side 2, side 3, side 4
- 5 sided = side 1, side 2, side 3, side 4, and side 5 (top)
- 6 sided = all sides

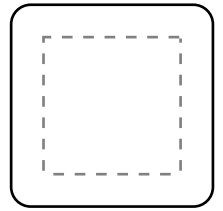
Side 1



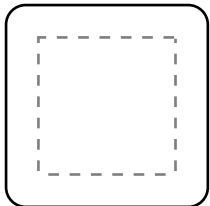
Side 2



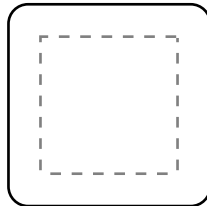
Side 3



Side 4



Side 5
(TOP)



Side 6
(BOTTOM)

