

2034

8" x 9-1/2" x 1/8"

**Full Color Hard
Mouse Pad**

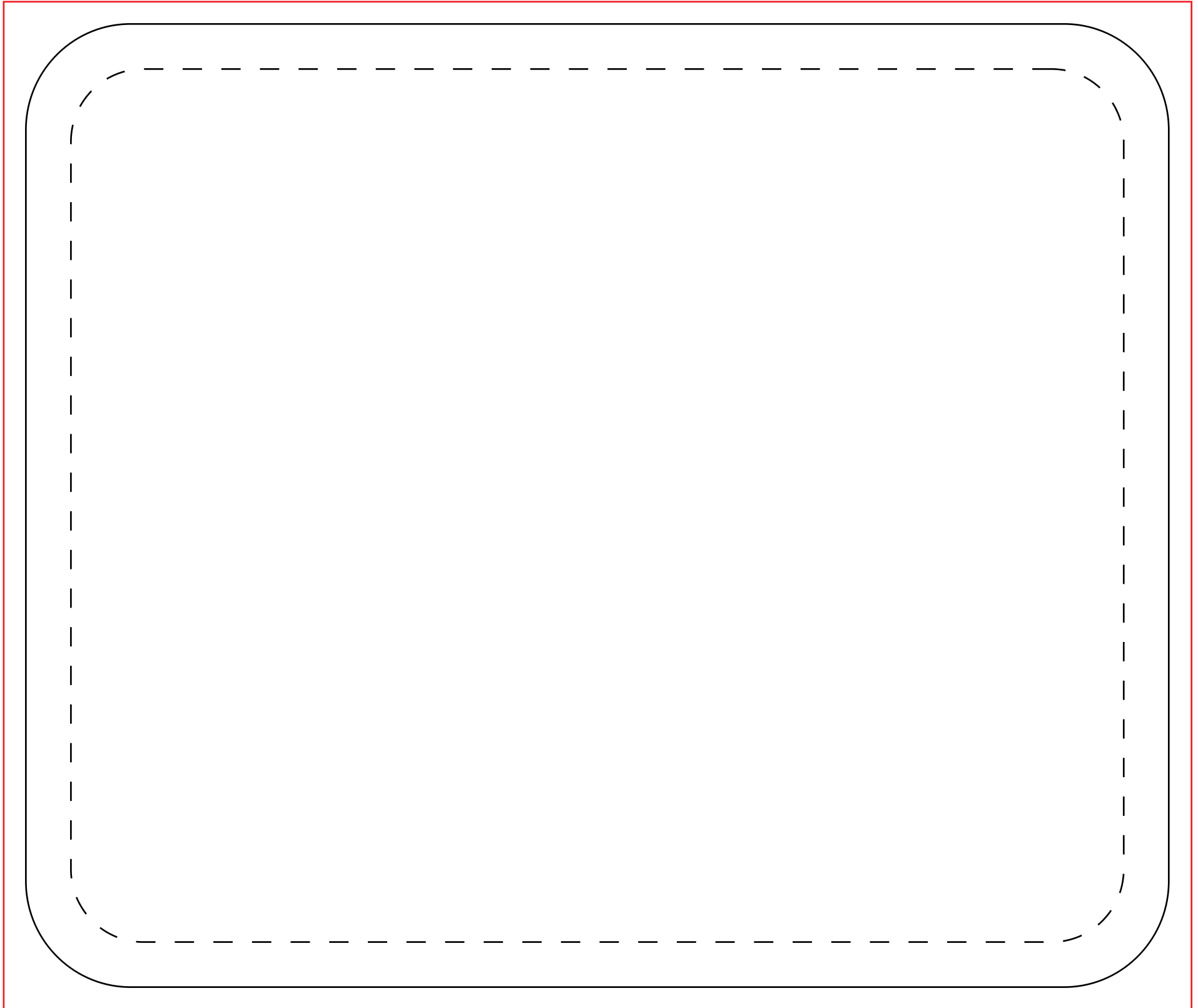
*Dashed line indicates imprint area
and will not appear on your product.
Black line Indicates the item outline
and will not appear on your product
Red line indicates the full bleed line
and will not appear on your product*

*Due to the variation in computer
monitors and printing processes
this proof is
NOT FOR EXACT COLOR approval.
Review this proof to ensure that all
elements are correctly placed.*

JOB: XXXXXXXXXXXX
ARTIST: XXXXXXXXXXXX

IMPRINT COLOR: XXXXXXXXXXXX

Purchase Order # XXXXXXXXXXXX



MINIMUM LINE THICKNESS

+

MINIMUM FONT PT SIZE

Ee

IMPRINT AREA:
8.75 in. W x 7.25 in. H

CUSTOM MOUSEPAD BELL

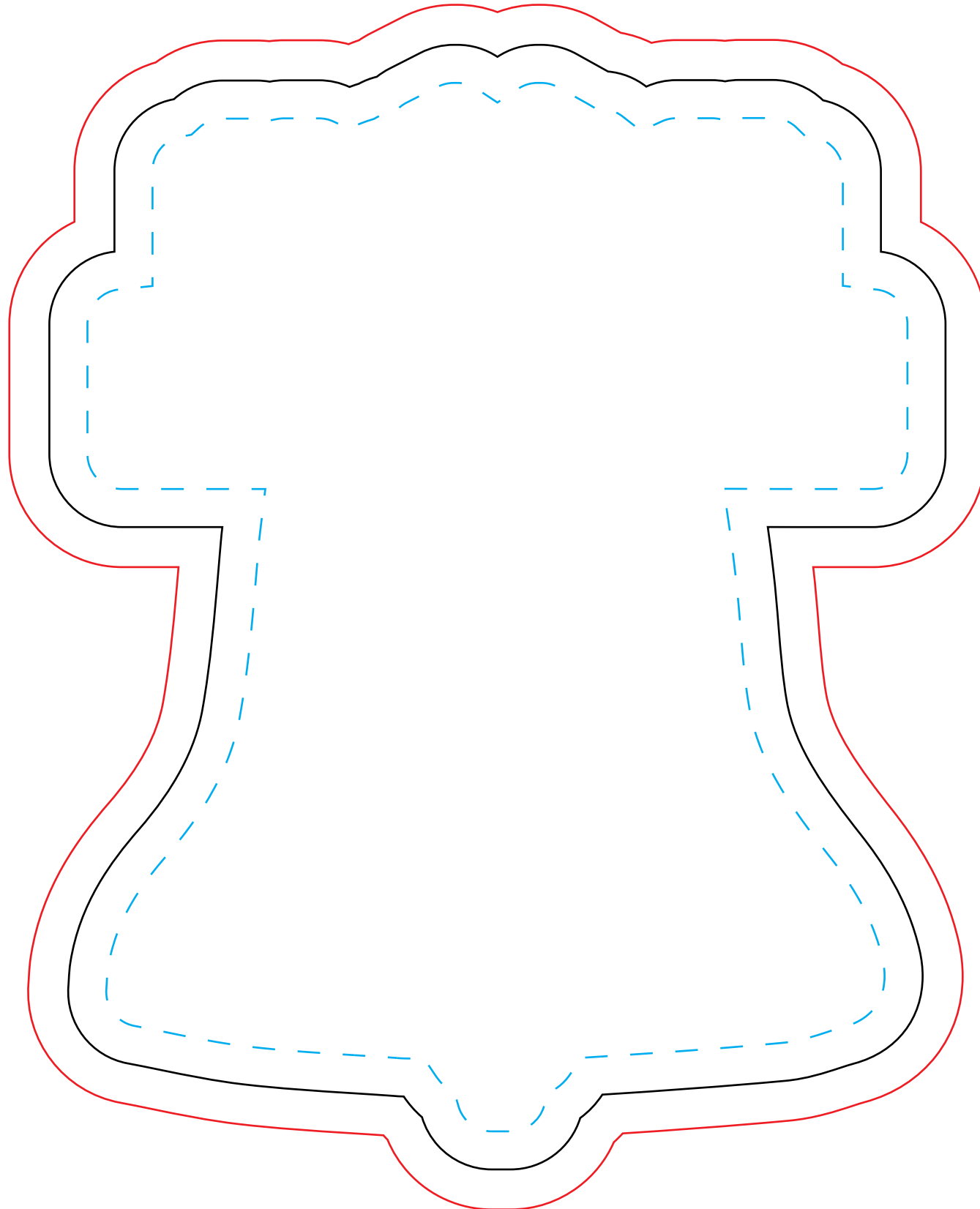
JOB: XXXXXXXXXXXX
ARTIST: XXXXXXXXXXXX

IMPRINT COLOR: XXXXXXXXXXXX

Purchase Order # XXXXXXXXXX

*Dashed line indicates imprint area and will not appear on your product.
Black line indicates the item outline and will not appear on your product
Red line indicates the full bleed line and will not appear on your product*

*Due to the variation in computer monitors and printing processes this proof is
NOT FOR EXACT COLOR approval.
Review this proof to ensure that all elements are correctly placed.*



IMPRINT AREA:
5.82 in. W x 7.44 in. H

PLEASE NOTE: This item is subject to a 1/8" shift in decoration due to the printing process.

CUSTOM MOUSEPAD FIFTH THIRD

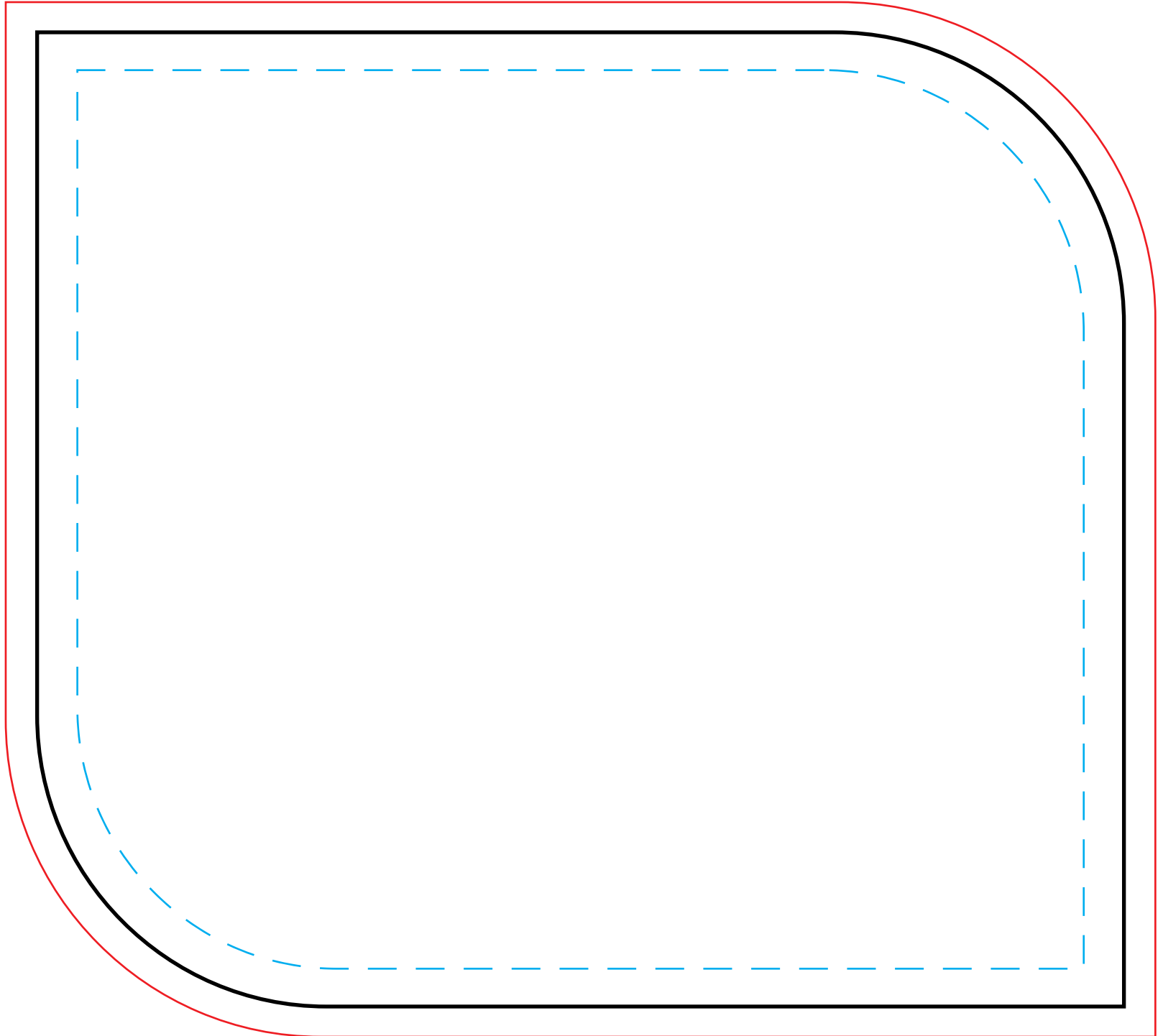
JOB: XXXXXXXXXXXX
ARTIST: XXXXXXXXXXXX

IMPRINT COLOR: XXXXXXXXXXXX

Purchase Order # XXXXXXXXXXXX

*Dashed line indicates imprint area and will not appear on your product.
Black line indicates the item outline and will not appear on your product
Red line indicates the full bleed line and will not appear on your product*

Due to the variation in computer monitors and printing processes this proof is
NOT FOR EXACT COLOR approval.
Review this proof to ensure that all elements are correctly placed.



IMPRINT AREA:
7.28 in. W x 6.5 in. H
FULL BLEED:
8.33 in. W x 7.5 in. H

CUSTOM MOUSEPAD GUITAR

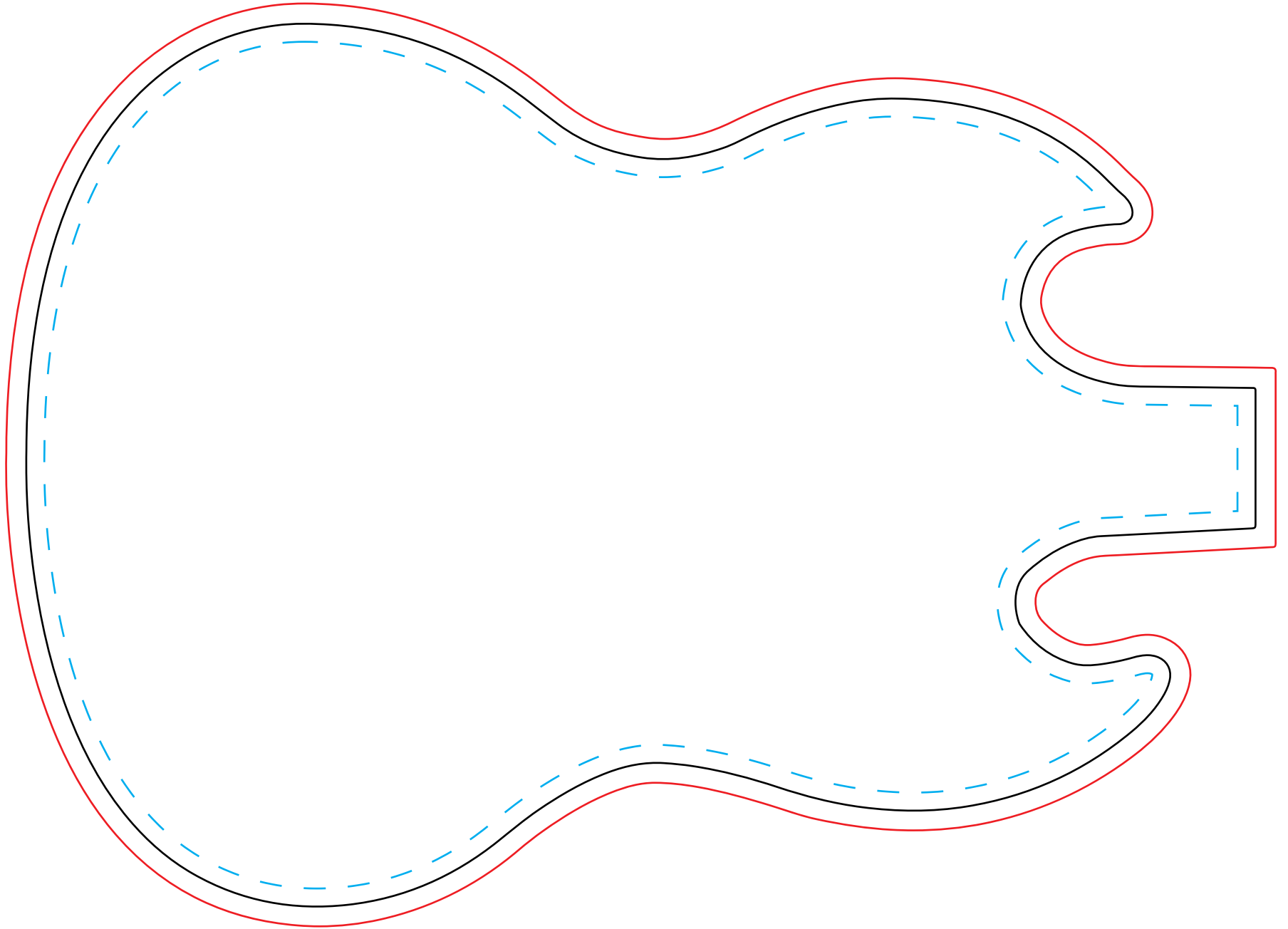
JOB: XXXXXXXXXXXX
ARTIST: XXXXXXXXXXXX

IMPRINT COLOR: XXXXXXXXXXXX

Purchase Order # XXXXXXXXXX

*Dashed line indicates imprint area
and will not appear on your product.
Black line indicates the item outline
and will not appear on your product
Red line indicates the full bleed line
and will not appear on your product*

*Due to the variation in computer
monitors and printing processes
this proof is
NOT FOR EXACT COLOR approval.
Review this proof to ensure that all
elements are correctly placed.*



IMPRINT AREA:
8.71 in. W x 6.17 in. H

PLEASE NOTE: This item is subject to a 1/8" shift in decoration due to the printing process.

CUSTOM MOUSEPAD HEXAGON

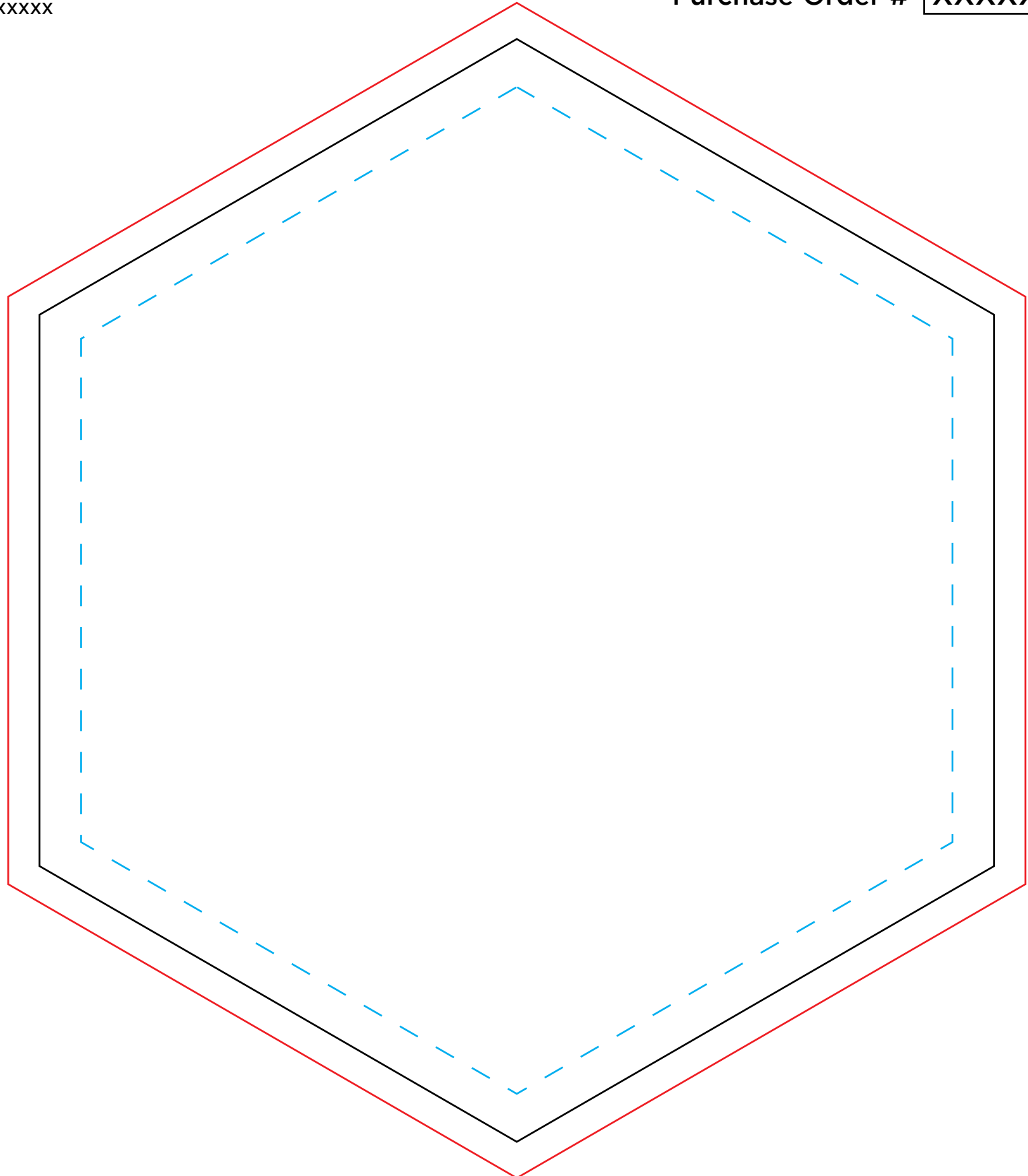
JOB: XXXXXXXXXX
ARTIST: XXXXXXXXXX

IMPRINT COLOR: XXXXXXXXXX

Purchase Order # XXXXXXXXXX

*Dashed line indicates imprint area and will not appear on your product.
Black line indicates the item outline and will not appear on your product.
Red line indicates the full bleed line and will not appear on your product.*

Due to the variation in computer monitors and printing processes this proof is NOT FOR EXACT COLOR approval. Review this proof to ensure that all elements are correctly placed.



IMPRINT AREA:
6.73 in. W x 7.77 in. H

PLEASE NOTE: This item is subject to a 1/8" shift in decoration due to the printing process.

CUSTOM MOUSEPAD HOUSE

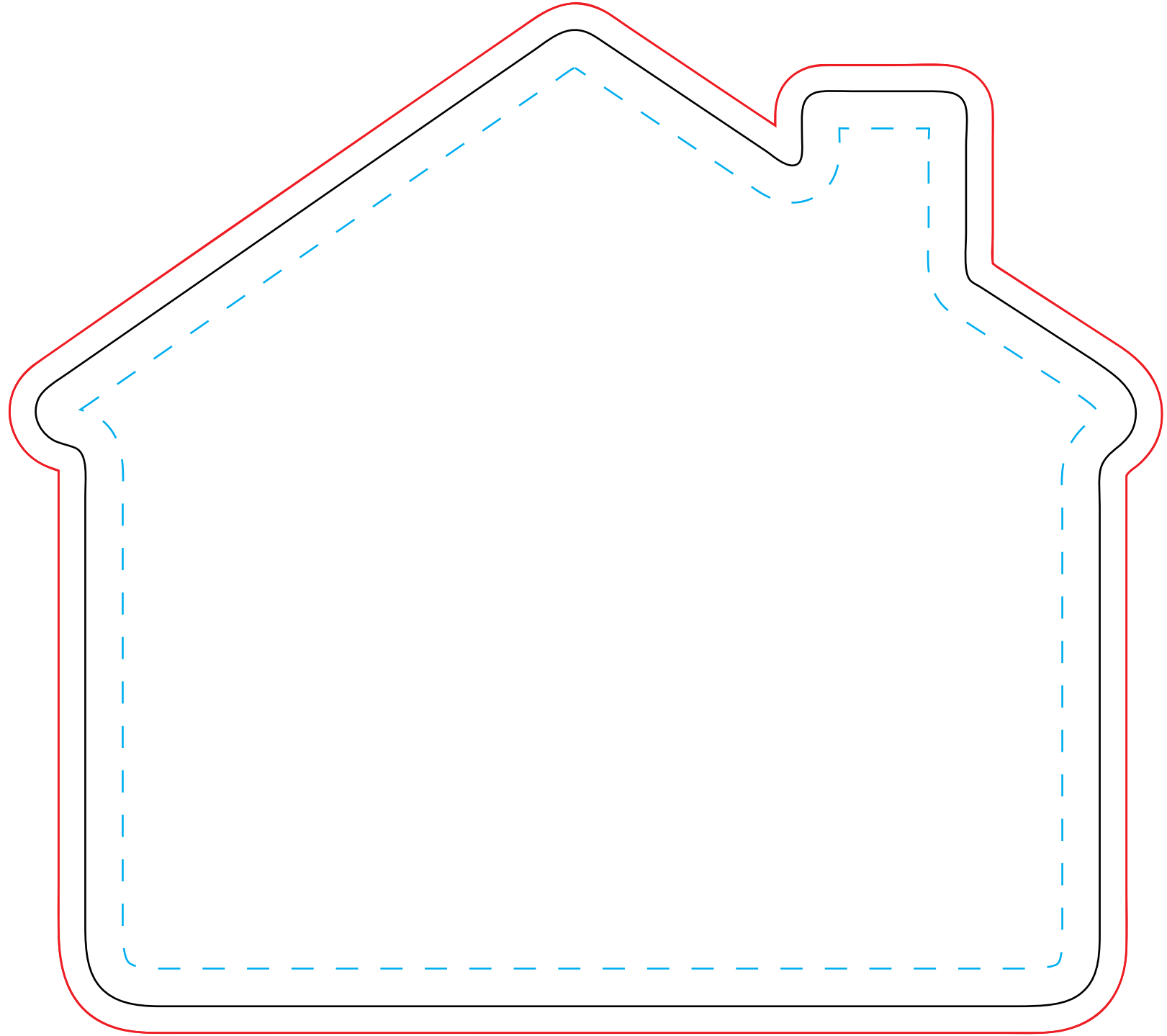
JOB: XXXXXXXXXXXX
ARTIST: XXXXXXXXXXXX

IMPRINT COLOR: XXXXXXXXXXXX

Purchase Order # XXXXXXXXXXXX

*Dashed line indicates imprint area and will not appear on your product.
Black line indicates the item outline and will not appear on your product.
Red line indicates the full bleed line and will not appear on your product.*

Due to the variation in computer monitors and printing processes this proof is NOT FOR EXACT COLOR approval. Review this proof to ensure that all elements are correctly placed.



IMPRINT AREA:
7.34 in. W x 6.5 in. H

PLEASE NOTE: This item is subject to a 1/8" shift in decoration due to the printing process.

CUSTOM MOUSEPAD OCTAGON

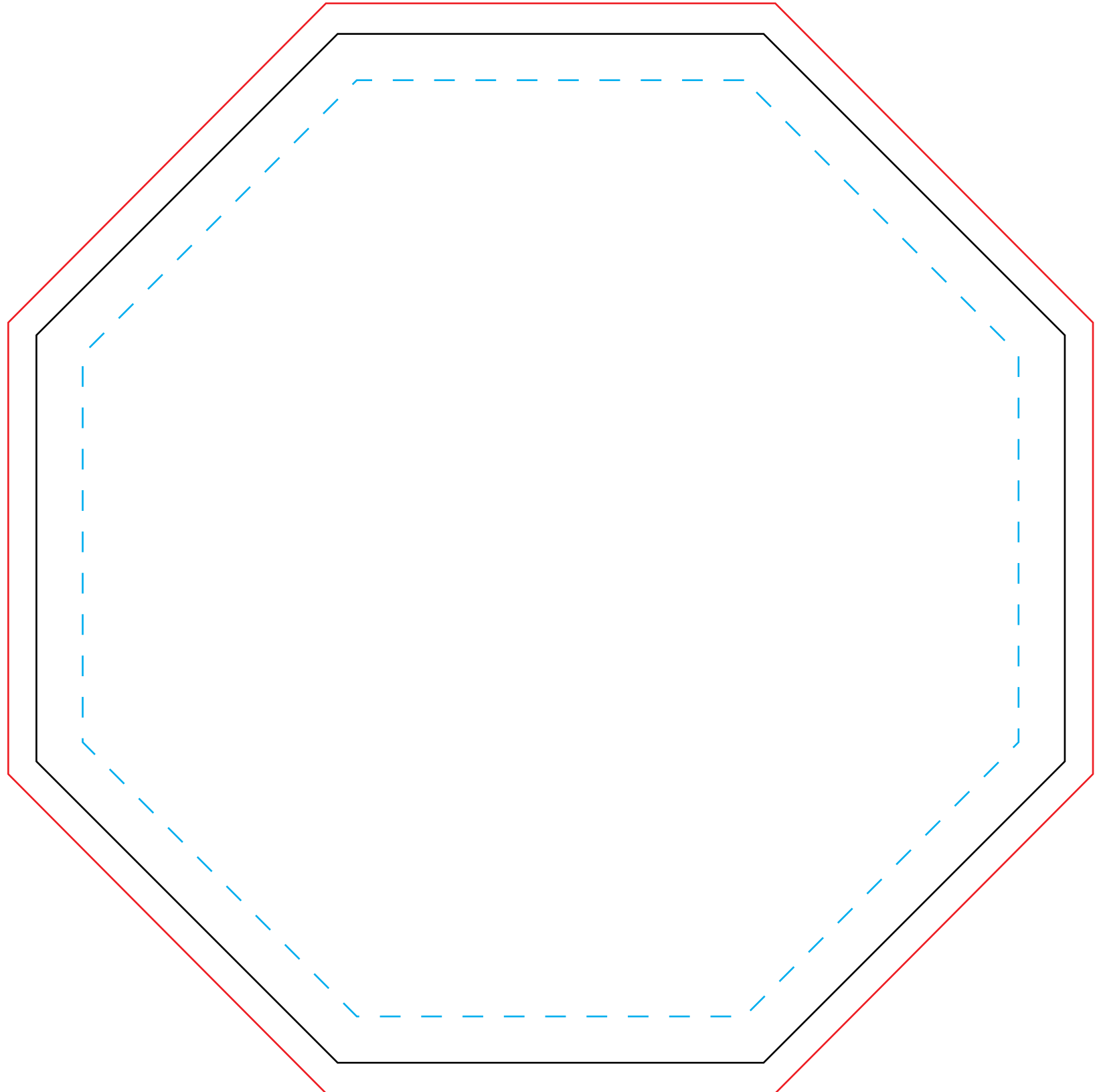
JOB: XXXXXXXXXXXX
ARTIST: XXXXXXXXXXXX

IMPRINT COLOR: XXXXXXXXXXXX

Purchase Order # XXXXXXXXXX

*Dashed line indicates imprint area and will not appear on your product.
Black line indicates the item outline and will not appear on your product.
Red line indicates the full bleed line and will not appear on your product.*

Due to the variation in computer monitors and printing processes this proof is NOT FOR EXACT COLOR approval. Review this proof to ensure that all elements are correctly placed.



IMPRINT AREA:
7.27 in. W x 7.27 in. H

PLEASE NOTE: This item is subject to a 1/8" shift in decoration due to the printing process.

CUSTOM MOUSEPAD OVAL

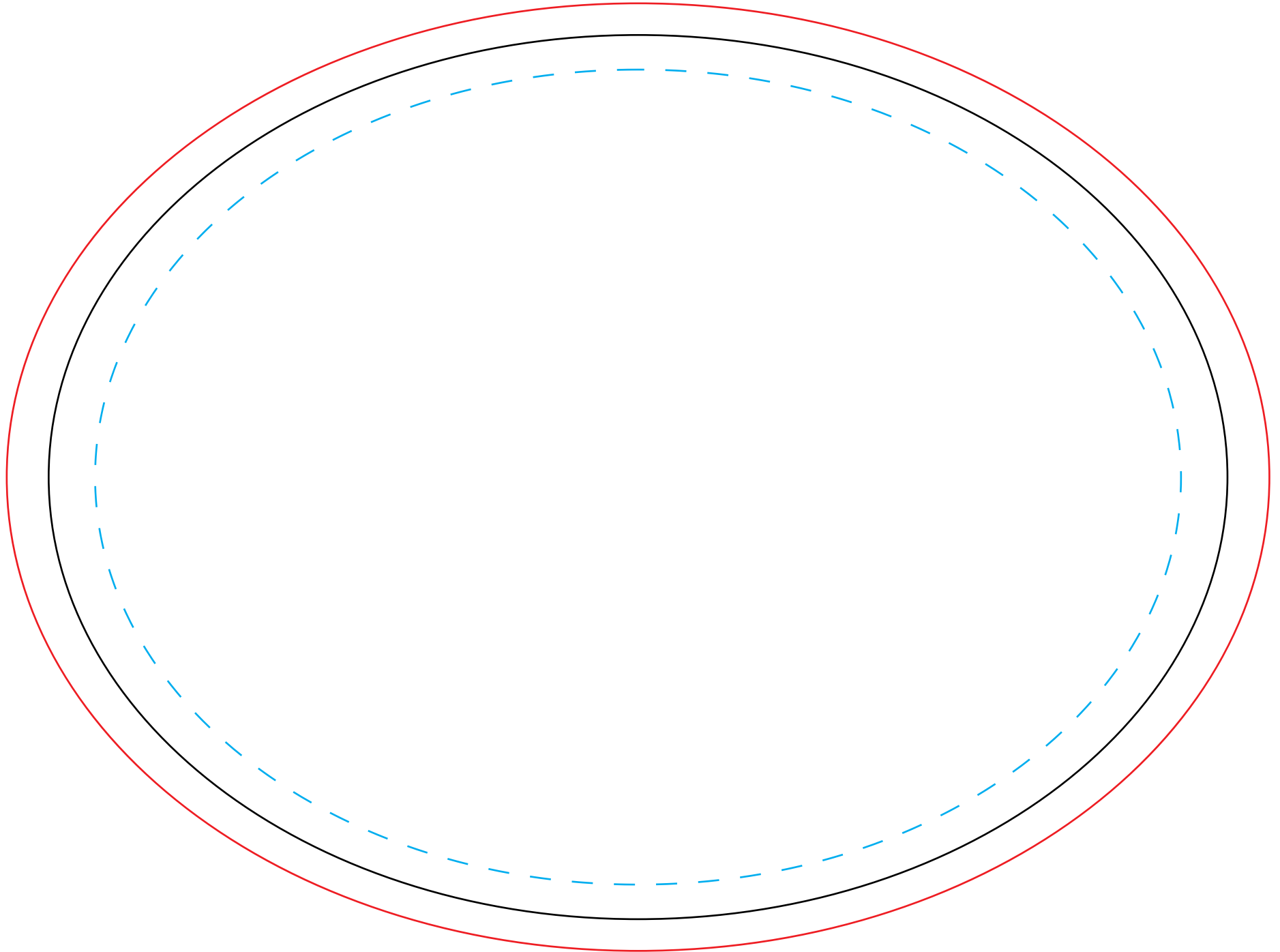
JOB: XXXXXXXXXXXX
ARTIST: XXXXXXXXXXXX

IMPRINT COLOR: XXXXXXXXXXXX

Purchase Order # XXXXXXXXXXXX

*Dashed line indicates imprint area
and will not appear on your product.
Black line indicates the item outline
and will not appear on your product
Red line indicates the full bleed line
and will not appear on your product*

*Due to the variation in computer
monitors and printing processes
this proof is
NOT FOR EXACT COLOR approval.
Review this proof to ensure that all
elements are correctly placed.*



IMPRINT AREA:
8.28 in. W x 6.21 in. H

PLEASE NOTE: This item is subject to a 1/8" shift in decoration due to the printing process.

CUSTOM MOUSEPAD POLYGON

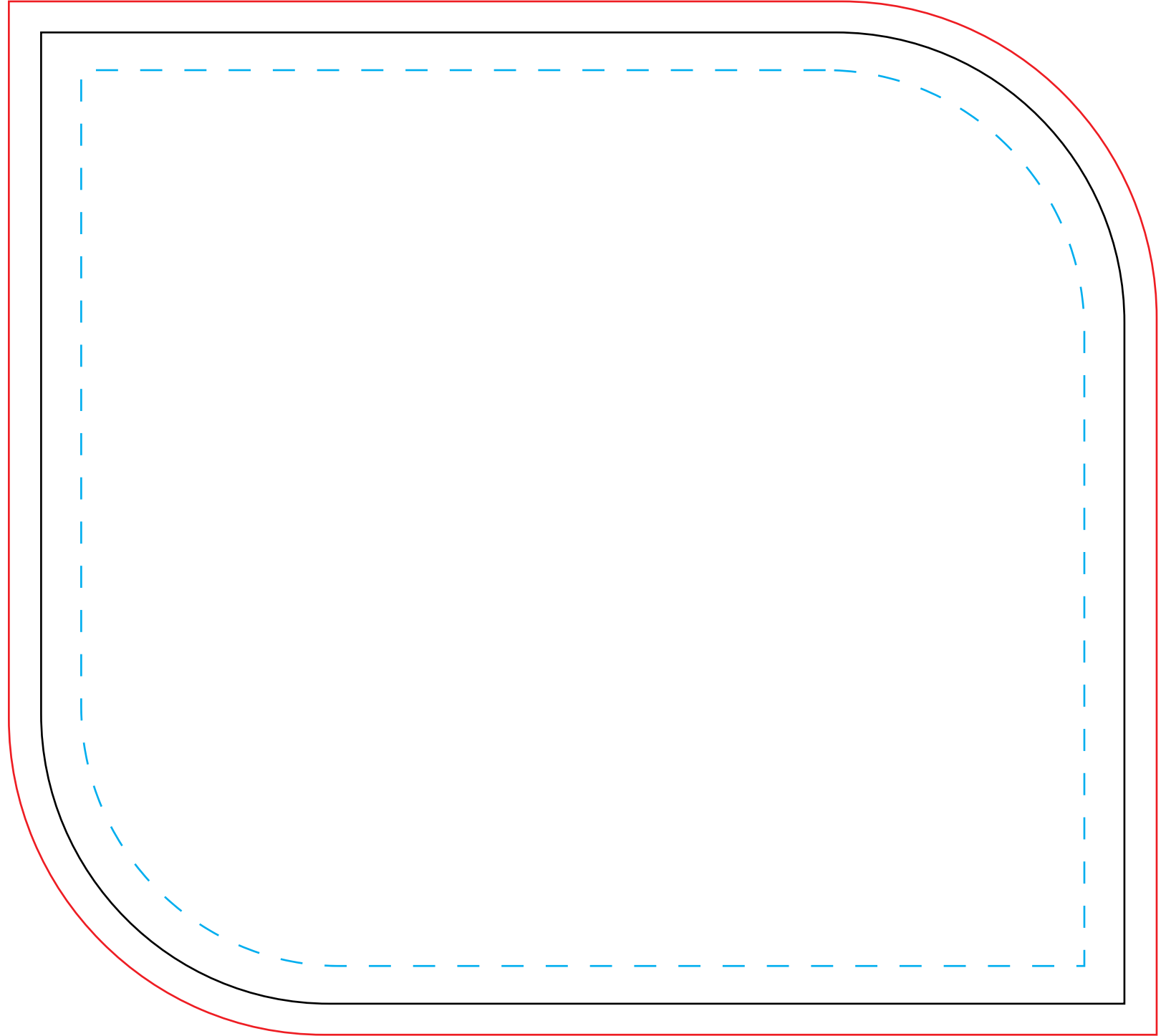
JOB: XXXXXXXXXXXX
ARTIST: XXXXXXXXXXXX

IMPRINT COLOR: XXXXXXXXXXXX

Purchase Order # XXXXXXXXXX

*Dashed line indicates imprint area and will not appear on your product.
Black line indicates the item outline and will not appear on your product
Red line indicates the full bleed line and will not appear on your product*

*Due to the variation in computer monitors and printing processes this proof is
NOT FOR EXACT COLOR approval.
Review this proof to ensure that all elements are correctly placed.*



IMPRINT AREA:
7.28 in. W x 6.5 in. H

PLEASE NOTE: This item is subject to a 1/8" shift in decoration due to the printing process.

CUSTOM MOUSEPAD SHIELD

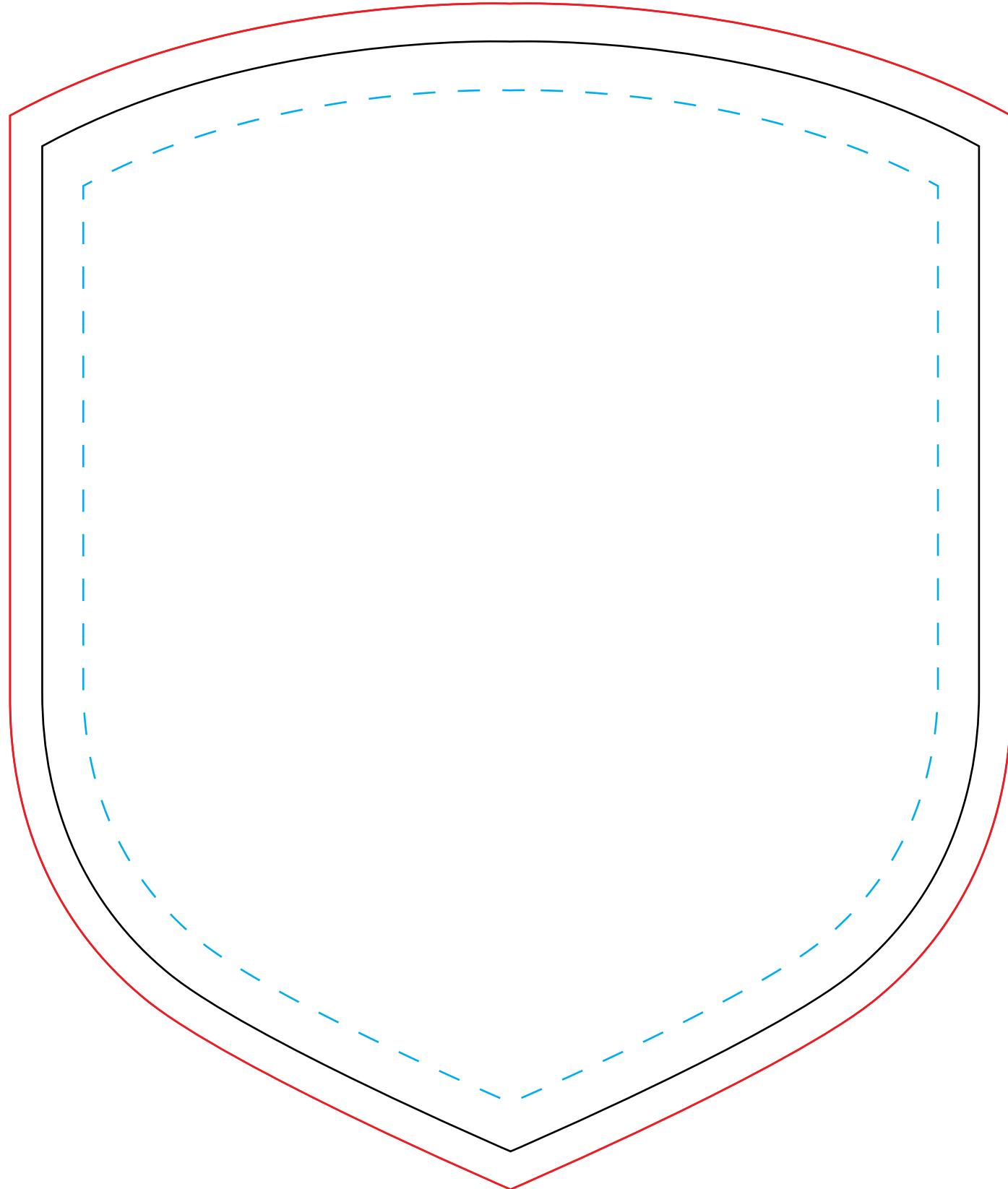
JOB: XXXXXXXXXXXX
ARTIST: XXXXXXXXXXXX

IMPRINT COLOR: XXXXXXXXXXXX

Purchase Order # XXXXXXXXXX

*Dashed line indicates imprint area and will not appear on your product.
Black line indicates the item outline and will not appear on your product.
Red line indicates the full bleed line and will not appear on your product.*

Due to the variation in computer monitors and printing processes this proof is NOT FOR EXACT COLOR approval. Review this proof to ensure that all elements are correctly placed.



IMPRINT AREA:
6.15 in. W x 7.28 in. H

PLEASE NOTE: This item is subject to a 1/8" shift in decoration due to the printing process.

CUSTOM MOUSEPAD SUNBURST

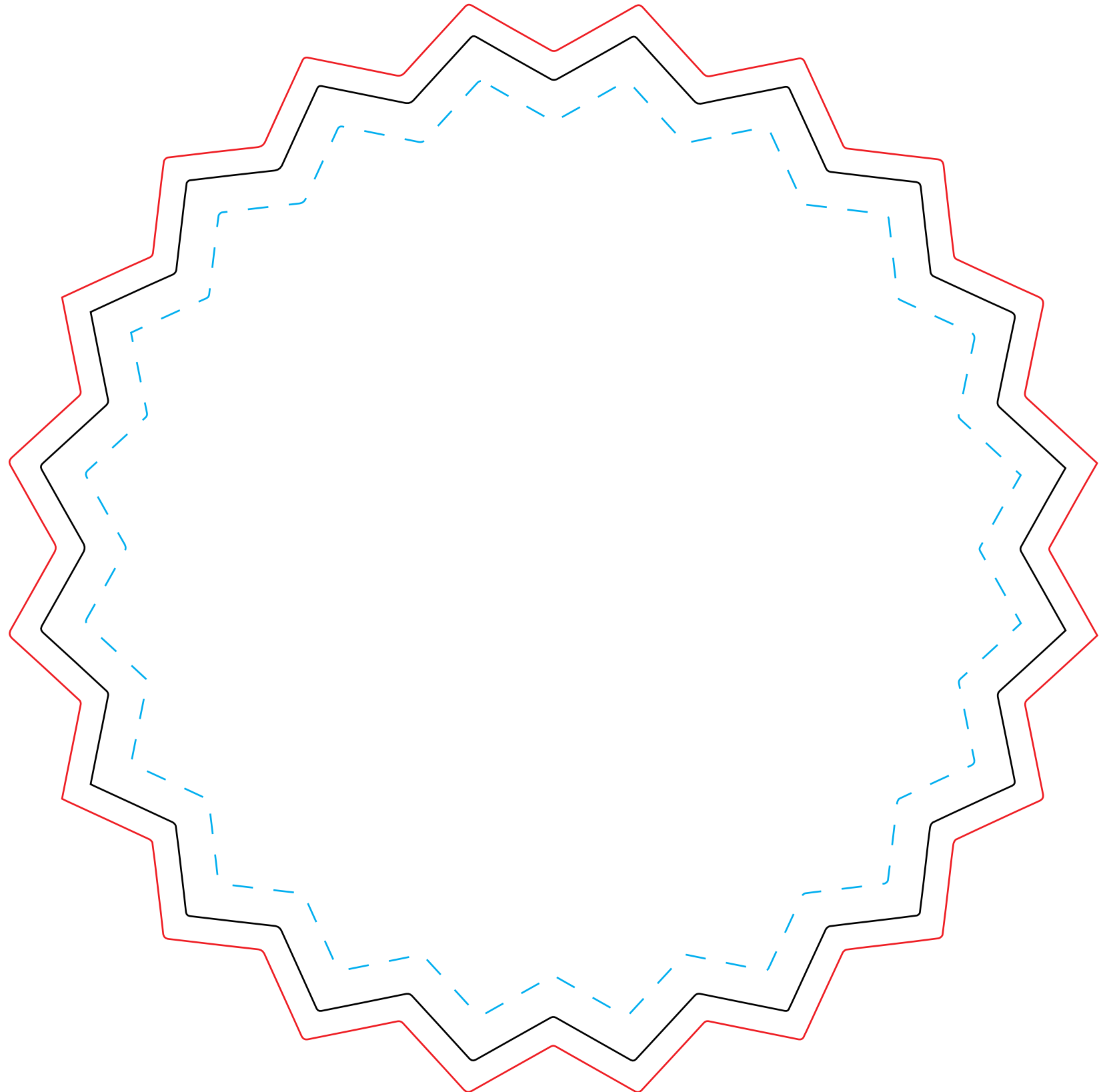
JOB: XXXXXXXXXXXX
ARTIST: XXXXXXXXXXXX

IMPRINT COLOR: XXXXXXXXXXXX

Purchase Order # XXXXXXXXXX

*Dashed line indicates imprint area and will not appear on your product.
Black line indicates the item outline and will not appear on your product
Red line indicates the full bleed line and will not appear on your product*

*Due to the variation in computer monitors and printing processes this proof is
NOT FOR EXACT COLOR approval.
Review this proof to ensure that all elements are correctly placed.*



IMPRINT AREA:
7.28 in. W x 7.28 in. H

PLEASE NOTE: This item is subject to a 1/8" shift in decoration due to the printing process.

CUSTOM MOUSEPAD TURTLE

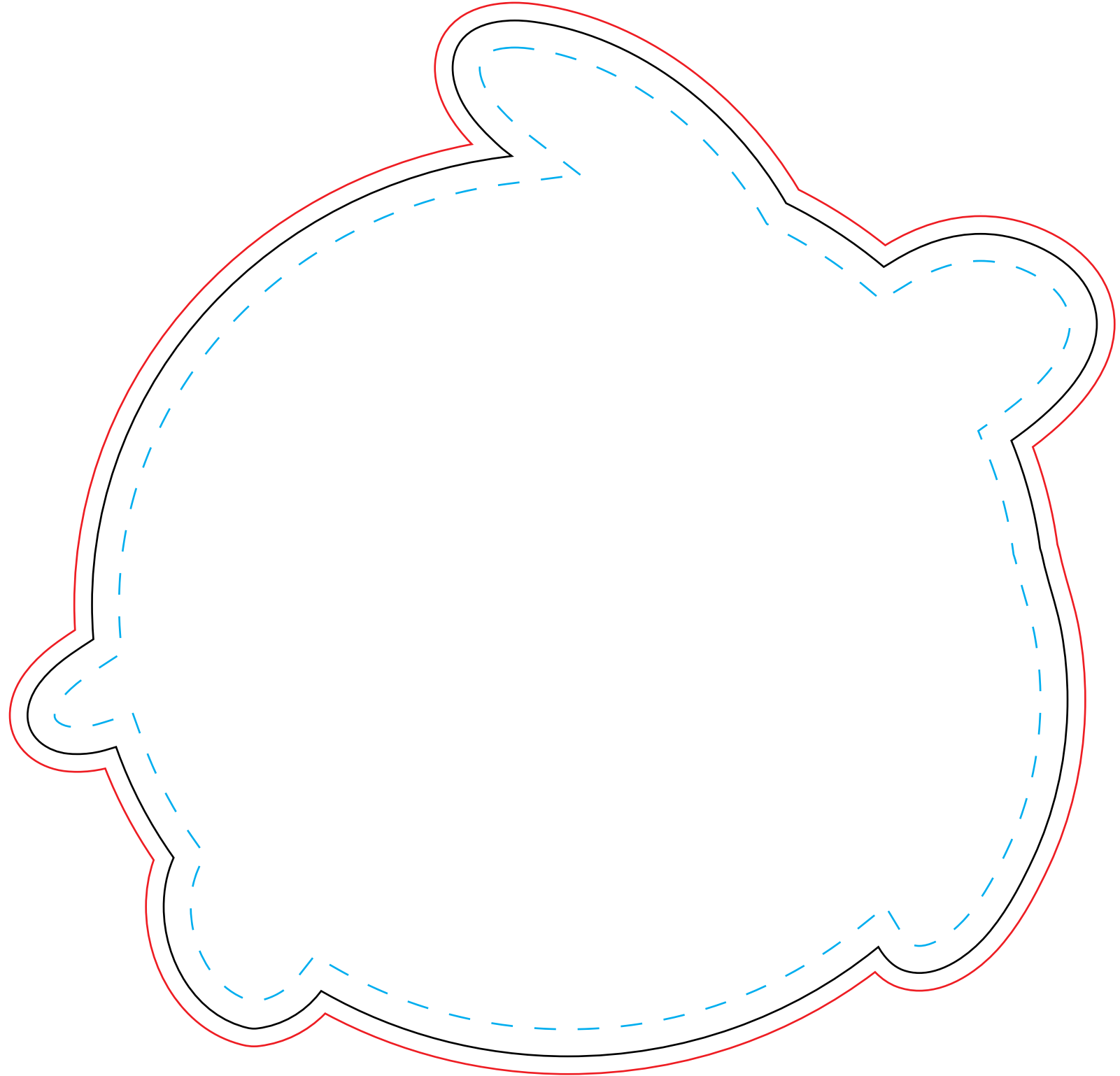
JOB: XXXXXXXXXXXX
ARTIST: XXXXXXXXXXXX

IMPRINT COLOR: XXXXXXXXXXXX

Purchase Order # XXXXXXXXXX

*Dashed line indicates imprint area
and will not appear on your product.
Black line indicates the item outline
and will not appear on your product
Red line indicates the full bleed line
and will not appear on your product*

*Due to the variation in computer
monitors and printing processes
this proof is
NOT FOR EXACT COLOR approval.
Review this proof to ensure that all
elements are correctly placed.*



IMPRINT AREA:
7.54 in. W x 7.29 in. H

PLEASE NOTE: This item is subject to a 1/8" shift in decoration due to the printing process.